

INCREASING QUALITY OF LIFE THROUGH RECREATIONAL OPPORTUNITIES

Museums

LACMA: the largest art museum in the western United States, with 100,000 objects dating from ancient times to the present. LACMA shares its vast collections through exhibitions, public programs, and research facilities that attract nearly a million visitors annually.

Natural History Museum: A national leader in exhibitions, education and research, it is the largest natural and historical museum in the western United States, safeguarding more than 35 million specimens and artifacts. The museum also includes the La Brea Tar Pits and, locally, the William S. Hart Museum (in William S. Hart Regional Park).

Music & the Arts

The L.A. County Music Center is the cultural hub of performing arts in the County and includes the 11-acre campus of the Dorothy Chandler Pavillion, Ahmanson Theatre, Mark Taper Forum, and Disney Concert Hall.

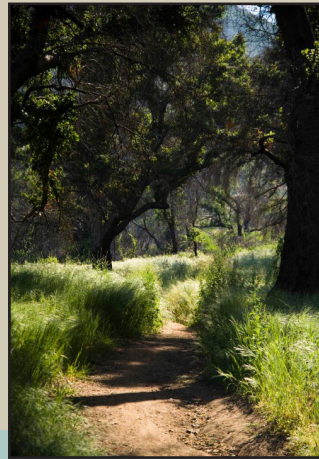
The L.A. County Arts Commission runs the John Anson Ford Theatres; implements the Civic Arts program, commissioning art projects for County facilities; coordinates “Arts for All,” the County’s strategic plan to restore arts education; and provides grants to non-profit organizations.

Parks, Natural Areas, Open Space & Trails

Residents of the Santa Clarita Valley turn to the unincorporated area to find both leisure and adventure. An abundance of outdoor activities await residents in their own backyard, with unincorporated SCV boasting:

- 13 parks, totaling 328 acres of parkland and 953 acres of open space
- The 67-acre Hasley Canyon Equestrian Center
- The 12,700+ acre Castaic Lake Recreation area and Sports Complex
- Over 1,900 acres of open space comprised of Placerita Canyon Natural Area and Nature Center, Vazquez Rocks Natural Area and Michael D. Antonovich Open Space Preserve
- 131 miles of trails

The future is bright for SCV adventurers, as the County continues its commitment to residents’ quality of life. Future projects include 88 miles of additional trails, 158 acres of parkland, and 8,324 acres of open space.



Unincorporated Open Space Paul Lawrence

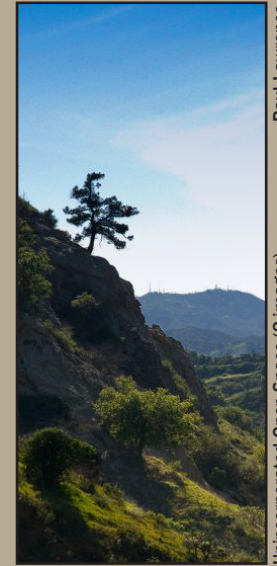
LIVING IN UNINCORPORATED SCV

From the idyllic suburban west side to the picturesque ranch lifestyle in Agua Dulce, the unincorporated communities of the Santa Clarita Valley comprise one of the most diverse constituent bases in the County, demanding unique governance that grants residents autonomy, yet remains responsive to community needs.

Residents of the unincorporated Santa Clarita Valley are governed by the five-member Board of Supervisors of Los Angeles County. With a gross domestic product that ranks 19th in the world, the County provides its residents a long list of services and infrastructure in the areas of community and municipal services, law enforcement, health and mental services, and children and family well-being. Santa Clarita Valley unincorporated residents enjoy unprecedented accessibility to these services, with 16 departments located within their valley.

The County of Los Angeles provides unincorporated residents with autonomy and increased representation through constituent-drafted Community Standards Districts and the election of local Town Councils and Civic Associations.

County officials often are accessible attending community meetings and events, and facilitating workshops and informational meetings for the public. The County also has a long-standing history of partnership and support for local non-profit organizations that provide critical services to residents.



Unincorporated Open Space (2 Images) Paul Lawrence



Unincorporated Open Space - Paul Lawrence



Six Flags Magic Mountain - Ashley Thomas

PUBLIC SAFETY

For the County of Los Angeles public safety means more than law enforcement, it means ensuring the greater health and security for all its citizens through multiple layers of prevention, enforcement, crisis management and recovery.

Sheriff's Department:

provides protection and enforcement through patrol, custody operations, correctional services, court operations and special enforcement. They also have extensive community outreach through:

- **Community/Law Enforcement Partnership program (CLEPP):** mobilizes and organizes communities against gangs, drugs, and violence.
- **Community Oriented Police Services (COPS):** enhances the quality of life for residents through a coordinated, multi-operational, team that adjusts to the dynamics of a particular community.
- **Community Advisory Committee (CAC):** provides direct input from the public regarding local issues and concerns.
- **Explorers:** training program established in 1969 for youth ages 15-21, to increase understanding between youth, law enforcement and the community.
- **Youth Athletic League (YAL):** provides a safe, supportive, haven for counseling, educational tutoring, and after school recreational activities for youth.
- **Vital Intervention and Directional Alternatives (VIDA):** utilizing proactive and creative techniques, this program offers treatment, prevention and punitive components to alter negative behavior in minors.

LA County Police:

provides law enforcement for patrons, employees and properties of the County, including administrative offices, parks, and health facilities.



Explorer Program Graduates

Fire Department:

provides protection from structural and wild land fires, responds to emergency medical and hazardous material situations, and educates the public through the Fire Prevention Division.



Sikorsky
Helicopter
landing on
golf course

LACFD

Office of Emergency Management:

organizes and directs the preparedness efforts of all County departments, including all disaster response plans and exercises, and inter-agency coordination. Also provides public workshops and informational seminars.

Public Health:

coordinates activities through a network of public health professionals throughout the community to prevent disease and promote the health and well-being for all persons in Los Angeles County. With a focus on the population as a whole, epidemiologists investigate the sources of disease outbreaks, environmental health specialists ensure safe food, water, and housing, and the department works with community coalitions to advocate for public policies to protect and improve health.

District Attorney Investigators:

primarily functioning to provide prosecution support to the District Attorney's legal staff, investigators have full peace officer status and conduct some of the most unique, sensitive, and complex criminal investigations in law enforcement today. D.A. Investigators are involved in a variety of operations, from high-profile raids in political corruption cases to probes in immigration fraud.

Nuisance Abatement Team (NAT):

a multi-agency task force assembled to abate the more difficult code violations and public nuisance conditions on private property.

Probation Department:

features the D.I.S.A.R.M. program that pairs deputy probation officers with local law enforcement to perform unannounced searches of probationers and their homes, targeting seizures of guns, drugs, and other contraband.